



STONEBLOC

**TIMELESS
RETAINING**

ENVIROCON
CAPTURING CONCRETE EXCESS



TIMELESS RETAINING

ABOUT STONEBLOC

Stonebloc helps you to maximise your land with timeless retaining.

How do we do this? Great design.

Great design lies at the heart of our business. We think about the people who will use our blocks, and the places our blocks will be used.

Our design approach is guided by the power of simplicity, because simple products are fast to learn and easy to use.

When you dive deeper, the system delivers a powerful combination of benefits.

They're fast to install, reducing wasted time and labour.

They're strong, creating resilient walls.

They're unique, creating timeless looking walls and enhancing the aesthetic value of your development.

It's why New Zealand's leading engineers and developers choose Stonebloc to maximise their land.

TIMELESS RETAINING MEANS:

- **FASTER DESIGN PROCESS**
- **FASTER INSTALLATION**
- **FASTER SITE HANDOVER**
- **UNRIVALLED RESILIENCE**
- **A UNIQUE AESTHETIC**

**ABOUT
STONEBLOC**

**WHY CHOOSE
STONEBLOC?**

**HOW WE
COMPARE**

THE BLOCKS

WALL DESIGNS

**INSTALLATION
PROCESS**

SUSTAINABILITY



FAST RETAINING

WHY STONEBLOC



FASTER

Precast concrete wall system means a faster installation.



VALUE

Premium stone wall finish at an affordable price point.



RESILIENT

Solid concrete blocks deliver unparalleled durability.



UNIQUE LOOK

Stonebloc allows you to customise your own facial pattern.



BOUNDARY

Vertical walls on the boundary maximise land space while meeting council requirements.



FUTURE PROOF

Modular walls can be non-destructively dismantled in the future to access utilities.

WHY CHOOSE STONEBLOC?

HOW WE COMPARE

THE BLOCKS

WALL DESIGNS

INSTALLATION PROCESS

SUSTAINABILITY



UNIQUE RETAINING

HOW WE COMPARE

Stonebloc offers a unique combination of benefits and value. By choosing Stonebloc, you're unlocking your land faster, speeding up the process of development. Below are the results of independent cost comparisons of Stonebloc against other common retaining solutions.

	STONEBLOC	TIMBER	SEGMENTAL WALL
BUILD READY DESIGNS	✓	✓	✓
MINIMAL FOUNDATIONS	✓		✓
PRE-BUILD INSPECTION		✓	
SPEED OF CONSTRUCTION	✓		
TIMELESS LOOK	✓		✓
EXTENDED DURABILITY	✓		✓
NON-DESTRUCTIVE DISMANTLING	✓		

- HOW WE COMPARE
- THE BLOCKS
- WALL DESIGNS
- INSTALLATION PROCESS
- SUSTAINABILITY



VERSATILE RETAINING

THE BLOCKS



1200 StoneBloc Base

Size: 800mm x 1200mm x 400mm
Weight: 900kg
Product Code: 4SB1200EBASETG



800 StoneBloc Base

Size: 800mm x 800mm x 400mm
Weight: 600kg
Product Code: 4SB800EBASETG



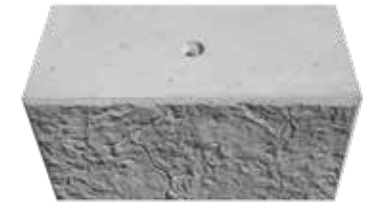
800 StoneBloc Standard

Size: 800mm x 400mm x 400mm
Weight: 300kg
Product Code: 4SB800ESTDTG



400 StoneBloc Standard

Size: 400mm x 400mm x 400mm
Weight: 150kg
Product Code: 4SB400ESTDTG



800 StoneBloc Flat Top

Size: 800mm x 400mm x 400mm
Weight: 300kg
Product Code: 4SB800EFTTG



200 StoneBloc Capper

Size: 800mm x 400mm x 200mm
Weight: 150kg
Product Code: 4SB200ECAPTG



200 StoneBloc Half

Size: 400mm x 400mm x 200mm
Weight: 75kg
Product Code: 4SB400EHALFCAPTG



800 StoneBloc End

Size: 800mm x 400mm x 400mm
Weight: 300kg
Product Code: 4SB800EENDTG



200 StoneBloc End

Size: 800mm x 400mm x 200mm
Weight: 150kg
Product Code: 4SB200EENDTG

THE BLOCKS

WALL DESIGNS

INSTALLATION
PROCESS

SUSTAINABILITY



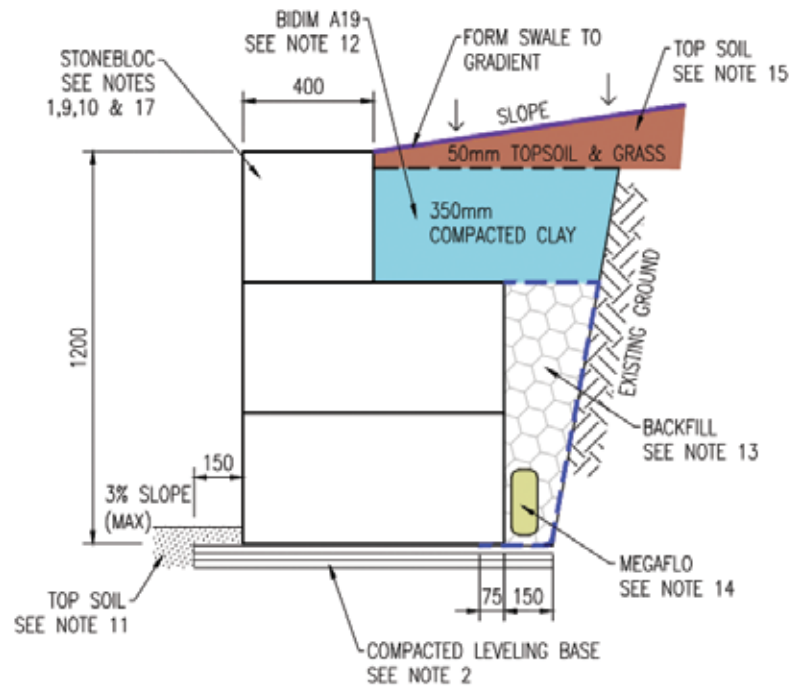
DURABLE RETAINING

STANDARD WALL DESIGNS

Stonebloc offers a range of standard designs for 5kPa and 12kPa walls up to 2m high. These generic designs are suitable for most applications and can be used for building consent submissions.

Where specific designs are needed, Stonebloc can provide contacts for independent engineers who have experience in designing with Stonebloc.

Our Consulting Engineer can help with any technical queries which may arise during the consideration or design process.



TYPICAL DETAIL



EXAMPLE OF STACKED BLOCKS

WALL DESIGNS

INSTALLATION PROCESS

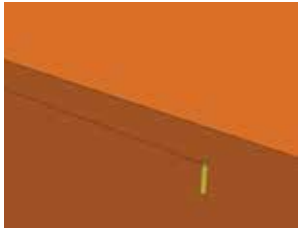
SUSTAINABILITY



EASY RETAINING

INSTALLATION PROCESS

Start with a compacted metal foundation between 200mm and 400mm thick. Stack your blocks on top of the foundation to the height required. Backfill against the wall. Installation is that simple.



STEP ONE

Run a string line along the length of the wall as a guide.



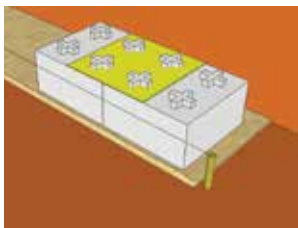
STEP TWO

Ensure leveling fins are level in both horizontal directions in the immediate area you will place the block.



STEP THREE

Place your first block. Leave a gap of 5mm between the front of the block and the string line. Ensure the block is level in both horizontal directions.



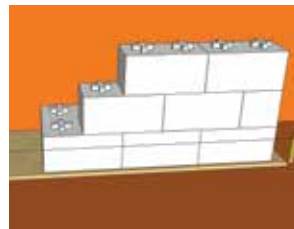
STEP FOUR

Place the next block using the stencil to ensure the correct spacing has been achieved. **Achieving the correct spacing is the most critical part of the installation process.**



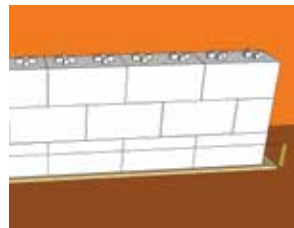
STEP FIVE

If required, use the long level to smooth out more of the levelling fins. Check it is level in both horizontal directions.



STEP SIX

Once you have placed 3-4 base blocks, return to the start of the wall to place the remaining layers. Simply stack the blocks on top of each in a running bond pattern.



STEP SEVEN

Continue to place the blocks, building the complete wall as you move along the length of the cut.

INSTALLATION
PROCESS

SUSTAINABILITY



RESILIENT RETAINING

SUSTAINABILITY

Product stewardship sits at the centre of the move towards the circular economy. The concept is about using resources and materials with ever-increasing efficiency. It leads to more productive outcomes, lower lifetime costs, and better environmental performance.

It's good for business, and at Envirocon we call this approach Practical Sustainability.

The Envirocon Product Stewardship Scheme is a partnership of the leading ready mix concrete suppliers with the aim of reducing waste to landfill. Envirocon captures high quality certified concrete surplus and manufactures innovative precast concrete products.

Not only is the concrete diverted from landfill, the resulting blocks can be reconfigured as needs change without destructive dismantling, reducing another potential waste stream.

This circular economy approach provides added value at each stage of the product life cycle.

ENVIROCON

In a world of limited resources, reducing waste and increasing productivity is essential to achieving sustainable growth. This is why Envirocon exists - to take 'waste' and reimagine it as a valuable building material.

Great design lies at the heart of our business. We think about the people who will use our blocks, and the places our blocks will be used. We think about how the needs of the structure may change over time, and what will happen at the end of its life.

Our designs are guided by the power of simplicity, because simple products are fast to learn and easy to use.

From this approach comes unique building systems - Interbloc and Stonebloc. At the core of the systems is a concrete block. The block designs look simple enough, but when you dive deeper they deliver a powerful combination of benefits.

OUR PRODUCTS DELIVER A UNIQUE COMBINATION OF BENEFITS:

They're fast to install, reducing wasted time and labour.

They deliver unparalleled durability, increasing the life of the structure.

They are one of the most cost effective building materials available.

Most importantly they can be dismantled and reused at the end of life, reducing resource and financial waste.

SUSTAINABILITY

ENVIROCON

CAPTURING CONCRETE EXCESS

ENVIROCON.CO.NZ | 0800 468 375