

ENVIROCON
CAPTURING CONCRETE EXCESS



INTERBLOC
PRECAST CONCRETE WALL SYSTEM



135
interbloc
0800 468 375
42 Bag Des 40/083
interbloc.co.nz

Fertiliser Storage Bin, Waikato

ABOUT INTERBLOC

THE MODULAR WALL SYSTEM REDEFINING FASTER, STRONGER, SAFER CONSTRUCTION

Interbloc is a modular precast concrete wall system designed to transform how you build. With unmatched flexibility, our system allows walls to be reconfigured as needed—without compromising structural integrity.

How do we do this? Great design.

At Interbloc, great design is at the heart of everything we do. We design with purpose, considering both the people using our blocks and the environments where they'll be placed.

Our philosophy is simple: powerful solutions don't need to be complicated. That's why our systems are intuitive, fast to learn, and effortless to use.

WHAT MAKES INTERBLOC SO EFFECTIVE? IT'S ALL IN THE DETAILS:

Fast Installation: Save time and labour with a system built for speed.

Unmatched Strength: Engineered for durability and resilience in any application.

Certified Safety: A fully engineered system with certified lifting for total peace of mind.

COMMON USES

- Retention Walls
- Bulk Materials Storage
- Fertiliser Storage
- Settlement Ponds
- Temporary Retaining
- Precast Building Foundations
- Deadman and Hoardings
- Rural Feed Storage





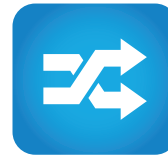
Aggregate Bins, Drury, Fulton Hogan

WHY INTERBLOC?



QUICK INSTALLATION

Precast blocks stack together with ease - two people can build up to 160m of wall per day.



FLEXIBILITY

Blocks can be reconfigured with ease or on-sold when no longer required.



BUYBACK

We back our system 100% and offer a unique buyback guarantee* on the blocks.



ASSURANCE

All our premium blocks come with comprehensive warranties, we even offer a unique Buyback Guarantee. Minimum MPa blocks can be supplied on request.



STRONGER

600mm thick solid concrete blocks and a unique interlocking shear key deliver unparalleled strength in even the harshest environments.



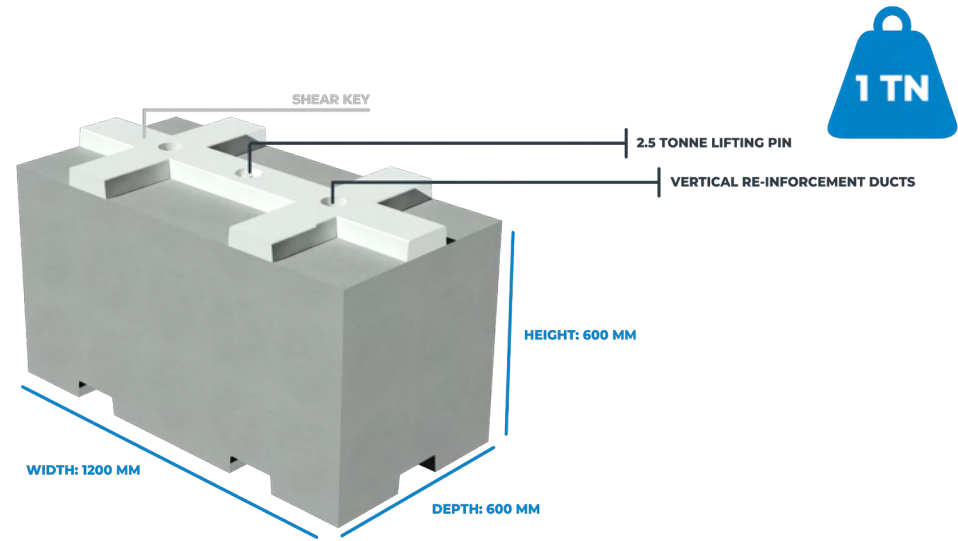
SAFER

Fully engineered system and certified lifting. Specific engineering available.

BLOCK CATALOGUE

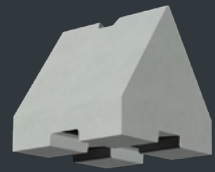
A STANDARD INTERBLOC IS THE CORE CONCRETE BLOCK FOR THE SYSTEM

Each premium block includes vertical reinforcement ducts, a shear key, and a lifting pin, all designed to enhance structural strength and integrity. The shear key transfers shear forces from lateral loads between the structure and the key but does not resist overturning forces, which are managed by the weight of the concrete block.



ALL BLOCKS ARE MADE FROM SOLID, VIBRATED CERTIFIED CONCRETE, WITH NO STEEL REINFORCING

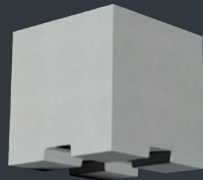
The Interbloc precast wall system offers 14 block types in three sizes: 1200mm, 1800mm, and 600mm, with more in development. The size refers to the block's facial length, while the height and depth are consistently 600mm x 600mm, except for capper blocks, which have a height of 300mm.



600 TOP BLOCK
600X600X600MM
290KG



600 CAPPER
600X600X300MM
290KG



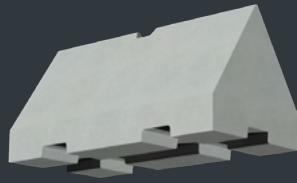
600 FLAT TOP
600X600X600MM
500KG



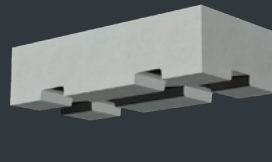
600 STANDARD
600X600X600MM
500KG



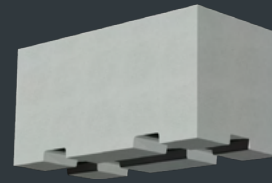
600 FLAT BOTTOM
600X600X600MM
500KG



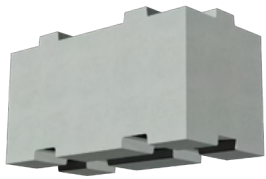
1200 TOP BLOCK
1200X600X600MM
580KG



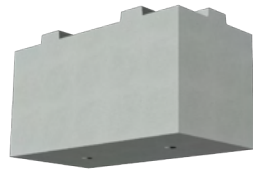
1200 CAPPER
1200X600X300MM
500KG



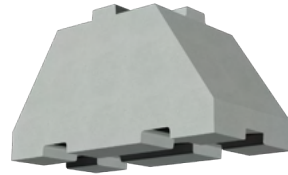
1200 FLAT TOP
1200X600X600MM
1000KG



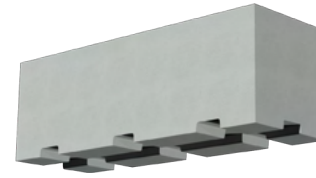
1200 STANDARD
1200X600X600MM
1000KG



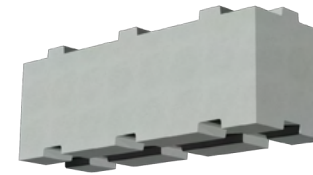
1200 FLAT BOTTOM
1200X600X600MM
1000KG



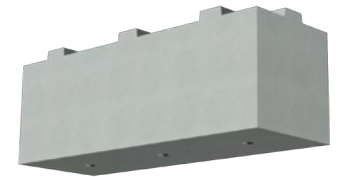
1200 BASE BLOCK
1200X600X600MM
750KG



1800 FLAT TOP
1800X600X600MM
1500KG



1800 STANDARD
1800X600X600MM
1500KG



1800 FLAT BOTTOM
1800X600X600MM
1500KG

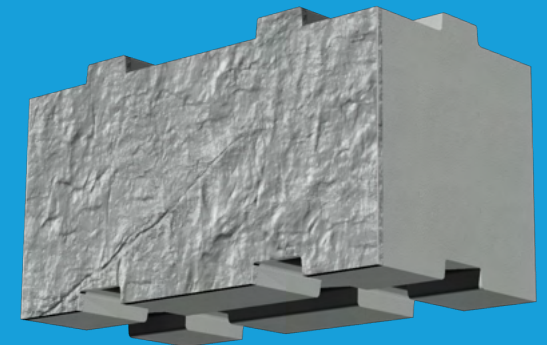
INTERBLOC⁺

BRINGING ADAPTABILITY AND TIMELESS AESTHETICS TO EVERY PROJECT

Interbloc+ combines structural integrity with a timeless fascia, making it the ideal choice for public-facing projects. Whether it's strength, efficiency, or visual appeal, our blocks deliver on every level—enhancing your project without compromise.

The block catalogue is also available in our Interbloc+, featuring a textured finish.

Partner with Interbloc+ to achieve efficiency, durability, and elegance in one seamless solution.



CROATIA DESIGN



Fulton Hogan, Silverdale



ENVIROCALC

DESIGN WITH EASE, BUILD WITH CONFIDENCE

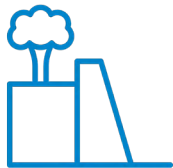
Easy and compliant Interbloc and Stonebloc design is now a reality with Envirocalc.

This purpose-built engineering design software produces NZBC compliant designs and consent ready reports.



QUICK CALCULATIONS

Get precise calculations for each layer of the wall.



DESIGNS SIMPLIFIED

Our software supports all types of gravity wall designs, delivering precision, efficiency, and compliance at every step.



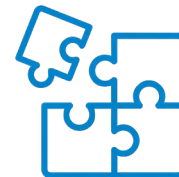
EXPERTLY ENGINEERED

Developed by civil engineering scholars to support all gravity wall designs with precision and ease.



PEER REVIEWED

Our calculation process is peer-reviewed by chartered engineers, ensuring accuracy and reliability.



ONE TOOL, MANY SOLUTIONS

Use EnviroBuild to create designs and EnviroCalc to automatically calculate everything based on your inputs.



SAVE TIME

Eliminate the need for manual drawings, reports, and external software.



Aggregate Bins, Silverdale, Fulton Hogan

REINFORCING OPTIONS

INTERBLOC IS A MASS BLOCK GRAVITY BASED SYSTEM. HOWEVER, THE BLOCKS CAN BE REINFORCED USING TWO METHODS TO INCREASE STRUCTURAL CAPACITY.



VERTICAL REINFORCING

Interbloc casts reinforcing ducts through the centre of the blocks at 600mm centres. This allows vertical steel reinforcing to be installed post placement using the Reidbar system. This enhances the structural integrity of the wall without compromising the speed of construction.

Before commencing block placement a short 'starter bars' is epoxied into the foundation. The wall is then constructed. Longer lengths of 'main bar' are inserted through the reinforcing ducts from the top of the wall. The main bar connects to the starter bar using a coupler. The mainbar is then tensioned and tied off with a nut and washer.



MECHANICALLY STABILISED EARTH WALL

A MSE wall is a composite structure consisting of alternating layers of compacted backfill and soil reinforcement elements, fixed to a facing wall. The stability of the wall system is derived from the interaction between the backfill and soil reinforcements.

Interbloc achieves this by casting geosynthetic 'fabric' into the blocks during manufacturing. This process creates a super strong structure capable of carrying high surcharges without compromising speed and flexibility.



Retaining Wall, Silverdale, Fulton Hogan

HOW INTERBLOC WORKS

FLEXIBLE STORAGE MADE EASY

Interbloc offers a versatile and durable storage solution, designed for quick installation and the flexibility to adapt to your changing needs. Implementing Interbloc on your site is simple—just consider a few key elements to get started.

1

Envirobuild, our 3D design tool, lets you create custom storage bins for your site.

2

Interbloc is best placed on a 150-300mm concrete slab. For low walls, compacted gravel foundations with our flared base block can be used.

3

Installation of our blocks is straightforward, with self-aligning blocks that lock into place like Lego bricks, and we provide end-to-end installation services

4

We offer multiple reinforcement options for you to choose from, that work best for your designs.

5

Roof structures can be bolted on for all-weather coverage. Interbloc offers customizable, durable storage solutions.



BAY 2

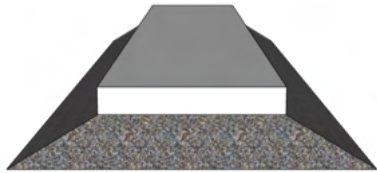


525

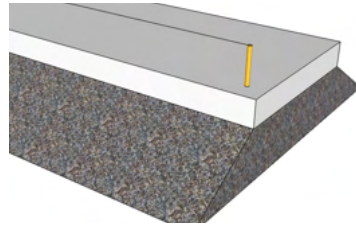
Aggregate Bins, Fulton Hogan

INSTALLATION PROCESS

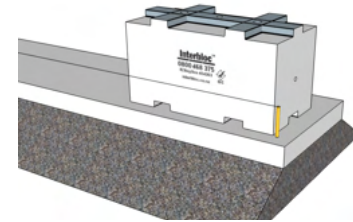
INTERBLOC'S UNIQUE INTERLOCKING DESIGN MEANS THE BLOCKS SELF-LOCATE DURING THE INSTALLATION PROCESS, DELIVERING UNPARALLELED BUILD SPEED AND LABOUR PRODUCTIVITY.



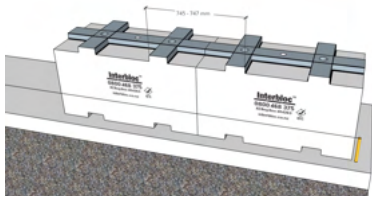
Start with a level foundation, preferably concrete.



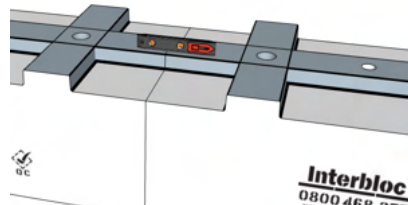
Run a string line to guide placement of the blocks.



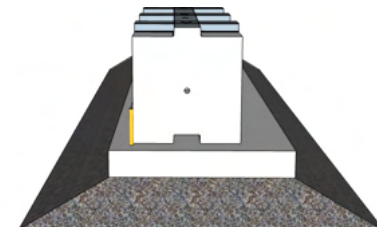
Beginning at one end, place your first block.



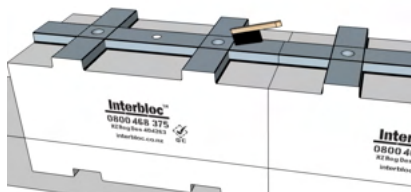
Place your second block. Ensure the measurement between interlocking shear key is 747mm.



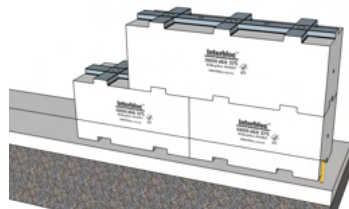
Ensure the blocks are level.



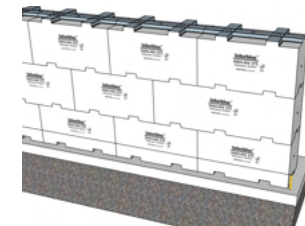
Ensure the blocks straight.



Brush any loose debris.



Place your next layer in a stretcher bond pattern.



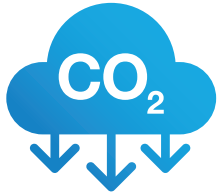
Complete your wall.



Landscape Supplies, Drury, Daltons

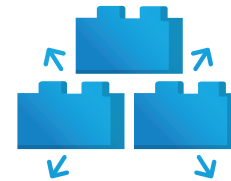
SUSTAINABILITY

INTERBLOC IS THE MOST SUSTAINABLE CONSTRUCTION SYSTEM AVAILABLE ON THE MARKET



LOW EMBODIED CARBON

Through our Accredited Product Stewardship Scheme, we repurpose high-quality excess concrete from the traditional linear economy into durable and flexible precast products.



ZERO WASTE

Interbloc is designed to be non-destructively dismantled at end of life and reused.



INDEPENDENTLY CERTIFIED

Backed by an independently produced and registered Environmental Product Declaration demonstrating an ultra low carbon profile.



BUYBACK GUARANTEE

Envirocon will purchase Interbloc back when you no longer require them.



ZERO WASTE CERTIFICATES

Envirocon can provide a zero-waste solution for excess concrete, helping companies cut costs and meet sustainability goals for IS Rating and Green Star certification.



SMART
1000 743 587
smart@hbk.co.nz



ENVIROCON

CAPTURING CONCRETE EXCESS

WWW.ENVIROCON.CO.NZ

0800 468 375