

ENVIROCON
CAPTURING CONCRETE EXCESS

STONEBLOC
TIMELESS RETAINING



Retaining Wall, Kumeu

ABOUT STONEBLOC

STONEBLOC HELPS YOU TO MAXIMISE YOUR LAND WITH TIMELESS RETAINING.

How do we do this? Great Design.

Great design lies at the heart of our business. We think about the people who will use our blocks, and the places our blocks will be used.

Our design approach is guided by the power of simplicity, because simple products are fast to learn and easy to use.

When you dive deeper, the system delivers a powerful combination of benefits.

The blocks are fast to install, reducing wasted time and labour.

Being strong, Stonebloc creates resilient walls.

The fascias are unique, creating timeless looking walls and enhancing the aesthetic value of your development.

It's why New Zealand's leading engineers and developers choose Stonebloc to maximise their land.

TIMELESS RETAINING BRINGS

- **Faster Design Process**
- **Faster Installation**
- **Faster Site Handover**
- **Unrivalled Resilience**
- **A Unique Aesthetic**



Seawall, South Taranaki District Council

WHY STONEBLOC?



QUICK INSTALLATION

A precast concrete wall system ensures faster installation.



VALUE

A custom masonry stone design finish at an affordable price.



RESILIENT

Solid concrete blocks deliver unparalleled durability.



TAILORED WALL FASCIAS

Choose from a variety of wall designs to create unique looks and aesthetics that suit your project requirements.



BOUNDARY

Vertical walls on the boundary maximise land space while meeting council requirements.



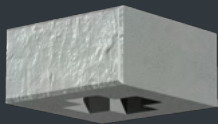
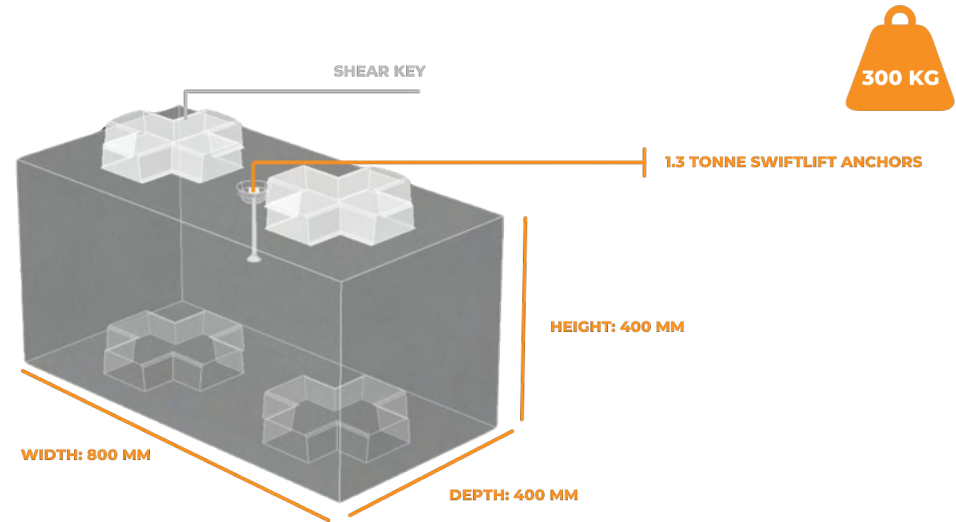
FUTURE PROOF

Modular walls can be non-destructively dismantled in the future to access utilities.

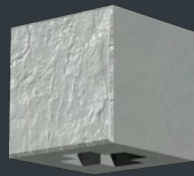
BLOCK CATALOGUE

A STANDARD STONEBLOC OFFERS A RANGE OF DESIGNS FOR WALLS UP TO 2M HIGH

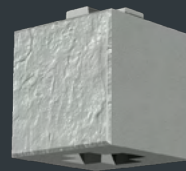
Each premium block includes a shear key, and a lifting pin, all designed to enhance structural strength and integrity. The shear key transfers shear forces from lateral loads between the structure and the key but does not resist overturning forces, which are managed by the weight of the concrete block.



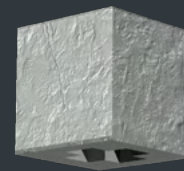
400 CAPPER
400X400X200MM
75 KG



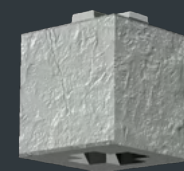
400 FLAT TOP
400X400X400MM
150KG



400 STANDARD
400X400X400MM
150KG



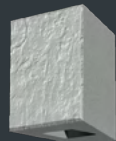
**400 FLAT TOP
DOUBLE ENDED**
400X400X400MM
150KG



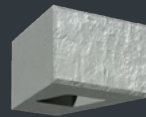
**400 STANDARD
DOUBLE ENDED**
400X400X400MM
150KG



**400 WEDGE CAPPER
LEFT ENDED**
400X400X200MM
45KG



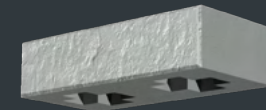
**400 WEDGE
LEFT ENDED**
400X400X400MM
90KG



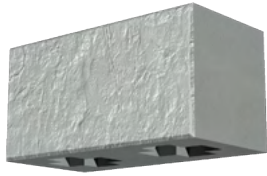
**400 WEDGE CAPPER
RIGHT ENDED**
400X400X200MM
45KG



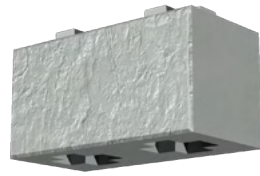
**400 WEDGE
RIGHT ENDED**
400X400X400MM
90KG



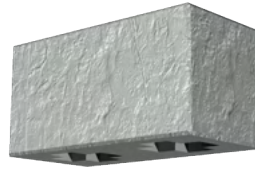
800 CAPPER
800X400X200MM
150KG



800 FLAT TOP
800X400X400MM
300KG



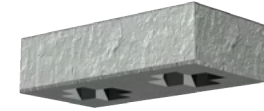
800 STANDARD
800X400X400MM
300KG



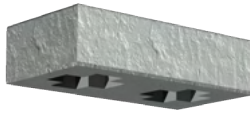
**800 FLAT TOP
RIGHT ENDED**
800X400X400MM
300 KG



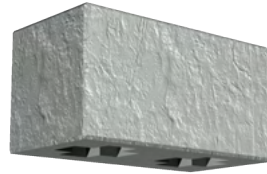
**800 STANDARD
RIGHT ENDED**
800X400X400MM
300KG



800 CAPPER RIGHT ENDED
800X400X200MM
150KG



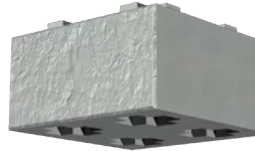
**800 CAPPER
LEFT ENDED**
800X400X200MM
150KG



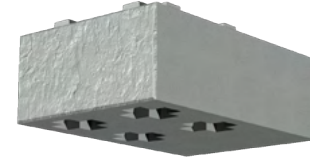
**800 FLAT TOP
LEFT ENDED**
400X400X400MM
150KG



**800 STANDARD
LEFT ENDED**
800X400X400MM
300KG



800 BASE BLOCK
800X800X400MM
600KG



1200 BASE BLOCK
800X1200X400MM
900KG



MSE Retaining Wall, Park Green



BLOCK FASCIAS

AT ENVIROCON, WE INNOVATE WITH FLEXIBLE DESIGNS THAT SUIT YOUR PROJECT, ALL WHILE OFFERING PRODUCTS WITH 97% REDUCED EMBODIED CARBON—WHERE SUSTAINABILITY MEETS STYLE.

SCHIST

Schist takes you back to an age where skilled stone masons carefully chiseled each piece by hand, creating timeless, unique works of art. Our interpretation brings that same craftsmanship to life, delivering precision-made walls that will stand the test of time and beauty for decades to come.



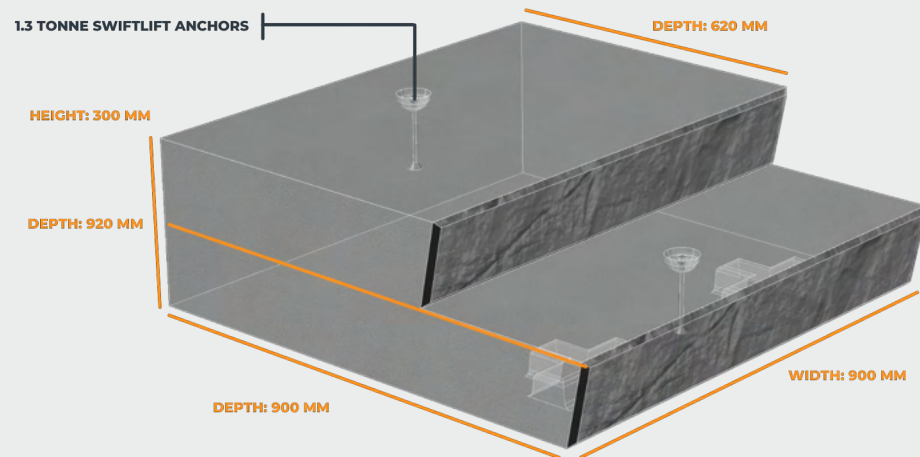
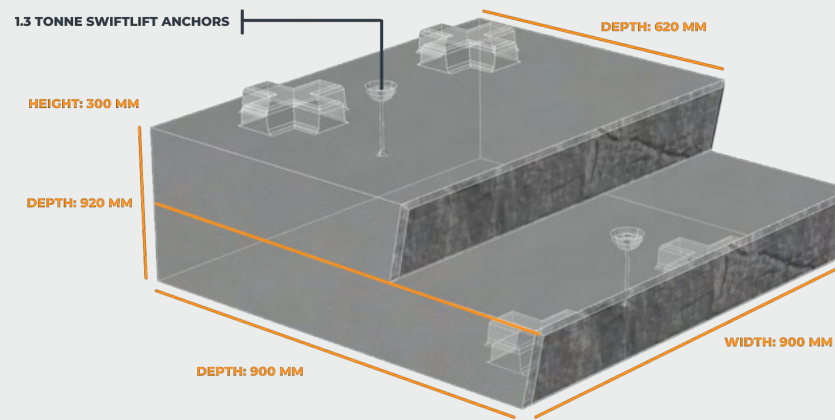
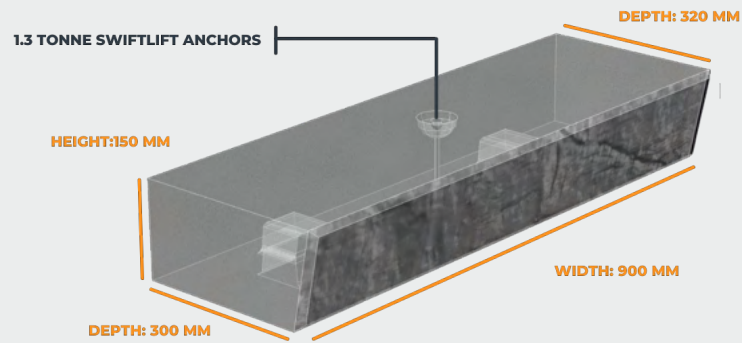
CROATIA

Our Croatia fascia features a textured stone-like design, offering a timeless aesthetic that brings the natural elegance of stone to your project. Crafted for durability, it provides a lasting, rugged beauty that will stand the test of time.





Retaining Wall, Kumeu



STAIRCASE DESIGNS

Customisable staircases, tailored to your needs, offering a complete retaining solution for any landscape project.



Retaining Walls, Ara Hills, Av Jennings



ENVIROCALC

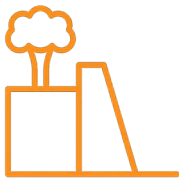
DESIGN WITH EASE, BUILD WITH CONFIDENCE

Easy and compliant Interbloc and Stonebloc design is now a reality with Envirocalc.
This purpose-built engineering design software produces NZBC compliant designs and consent ready reports.



QUICK CALCULATIONS

Get precise calculations for each layer of the wall.



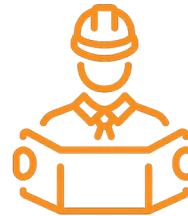
DESIGNS SIMPLIFIED

Our software supports all types of gravity wall designs, delivering precision, efficiency, and compliance at every step.



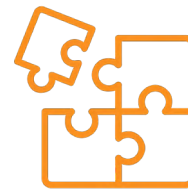
EXPERTLY ENGINEERED

Developed by civil engineering scholars to support all gravity wall designs with precision and ease.



PEER REVIEWED

Our calculation process is peer-reviewed by chartered engineers, ensuring accuracy and reliability.



ONE TOOL, MANY SOLUTIONS

Use EnviroBuild to create designs and EnviroCalc to automatically calculate everything based on your inputs.



SAVE TIME

Eliminate the need for manual drawings, reports, and external software.




PROFORM
homes

Show Home
Open Hours
Wednesday, Thursday 12-3pm
Sunday 1-4pm
or by appointment

07 774 9135 or 021 533 938
info@proform.co.nz

Proform Showhome, Tauranga

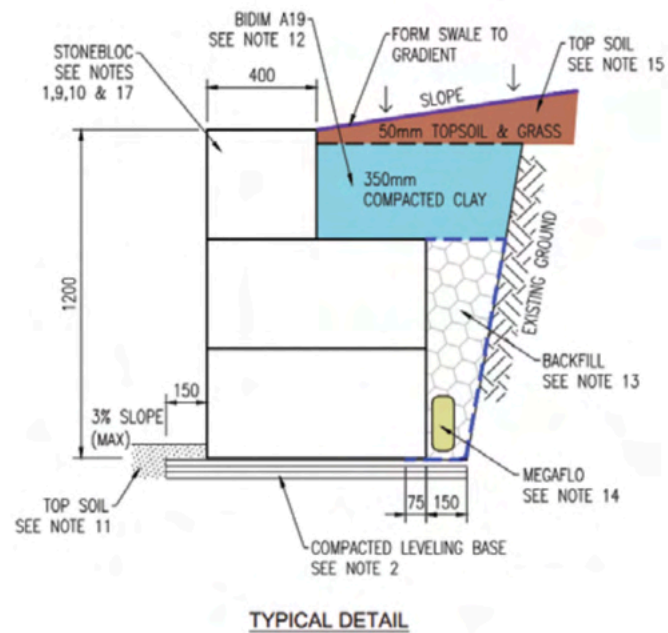
STANDARD WALL DESIGNS

STONEBLOC OFFERS A RANGE OF STANDARD DESIGNS FOR 5KPA AND 12KPA WALLS

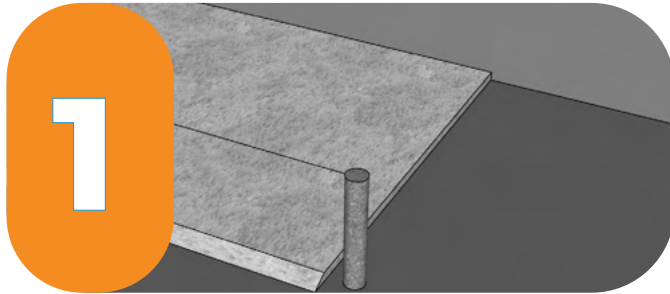
These generic designs are suitable for most applications and can be used for building consent submissions.

Where specific designs are needed Stonebloc can provide contacts for independent engineers who have experience in designing with Stonebloc.

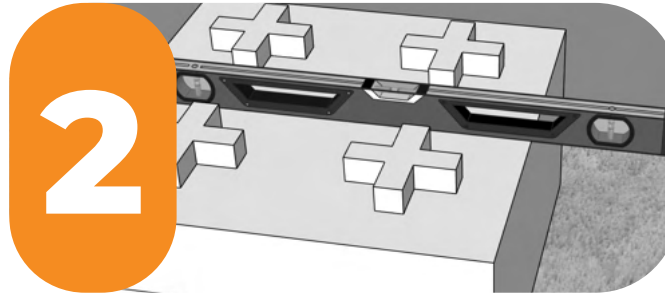
Our Consulting Engineer can help with any technical queries which may arise during the consideration or design process.



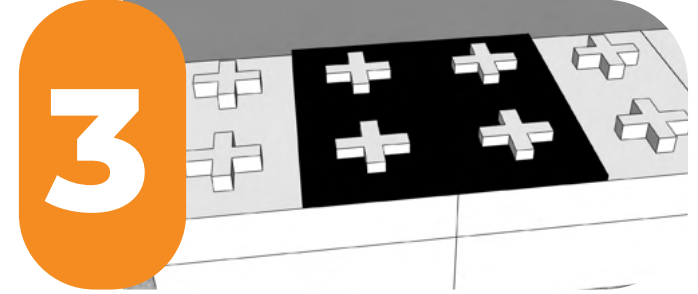
INSTALLATION PROCESS



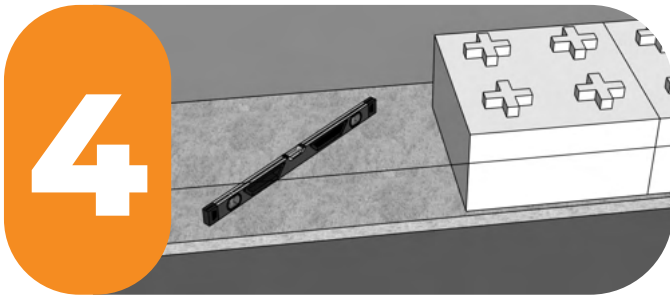
1 Level the hanging string along the wall. Check level for fines in placement area.



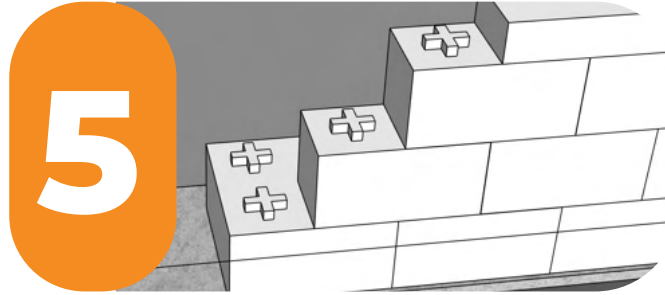
2 Place your first block. leave a gap of 5mm between the front of the block and the string line. Ensure the block is level in both horizontal directions.



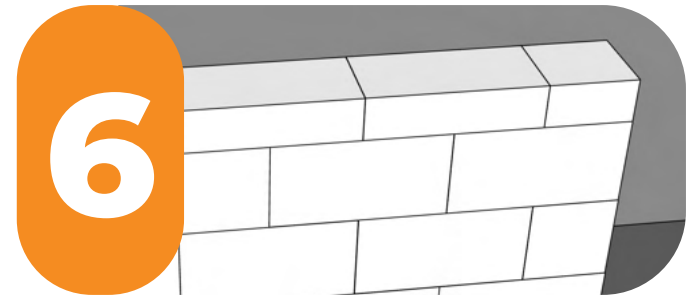
3 Placed the next block using the stencil to ensure the correct spacing has been achieved. **Achieving the correct spacing is the most critical part of the installation process**



4 If required, use the long level to smooth out more of the levelling fines. Check it is level in both horizontal directions.



5 Once you have placed 3 to 4 base blocks, return to the start of the wall to place the remaining layers. Simply stack the blocks on top of each other in a running bond pattern.



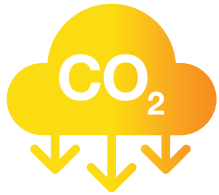
6 Continue to place the blocks , building the complete wall as you move along the length of the cut.

Retaining Walls, Ara Hills, Av Jennings



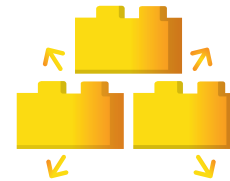
SUSTAINABILITY

STONEBLOC IS THE MOST SUSTAINABLE CONSTRUCTION SYSTEM AVAILABLE ON THE MARKET



LOW EMBODIED CARBON

Through our Accredited Product Stewardship Scheme, we repurpose high-quality excess concrete from the traditional linear economy into durable and flexible precast products.



ZERO WASTE

Stonebloc is designed to be non-destructively dismantled at end of life and reused.



INDEPENDENTLY CERTIFIED

Backed by an independently produced and registered Environmental Product Declaration demonstrating an ultra low carbon profile.



ZERO WASTE CERTIFICATES

Envirocon can provide a zero-waste solution for excess concrete, helping companies cut costs and meet sustainability goals for IS Rating and Green Star certification.



Williams Corporation. Auckland



ENVIROCON

CAPTURING CONCRETE EXCESS

WWW.ENVIROCON.CO.NZ

0800 468 375